



If you like it... Crown it!

DECORATIVE PRODUCTS PRICE LIST

WITH EFFECT FROM
01.03.2017

VERSION 1

DOWNLOAD

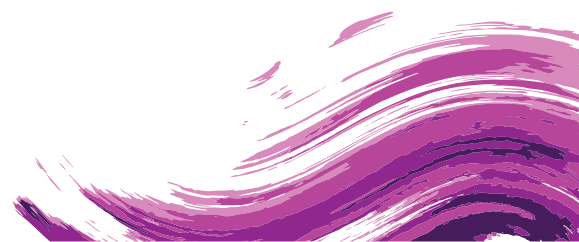


COLOUR APP



DECORATIVE

PRODUCT CODE	PRODUCT	20 Ltrs	4 Ltrs	1 Ltr		
PREMIUM EMULSION FINISHES - EXTERIOR						
C61AA	Crown Permacote Ultra Guard with Silicone	13,900	2,780	850		
C05AA	Crown Permaplast Long Life Exterior Emulsion	12,742	2,548	765		
C52AA	Crown Permacote Exterior Emulsion with Teflon® Surface Protector	14,965	2,993	898		
PREMIUM EMULSION FINISHES - INTERIOR						
C50AA	Crown Vinyl Matt Emulsion with Teflon® Surface Protector	12,295	2,459	738		
C01AA	Crown Vinyl Luxury Matt Emulsion	10,990	2,198	660		
C03AA	Crown Silk Vinyl Emulsion	11,780	2,356	707		
C03AD	Crown Medicryl Emulsion	12,000	2,550			
C02AA	Crown Covermatt Emulsion	5,950	1,190	357		
C06AC	Crown Covermatt +2 Emulsion	6,365	1,273	382		
C07AC	Crown Transeal - Acrylic Clear Finish (Brick, Stone, Quarry Tiles etc)	9,345	1,869	561		
C07AB	Crown Eco Binder	4,750	1,030			
ZERO VOC EMULSION FINISHES - INTERIOR & EXTERIOR						
C01AF	ZV - Crown Vinyl Luxury Matt Emulsion	10,990	2,198	660		
C03AE	ZV - Crown Silk Vinyl Emulsion	11,780	2,356	707		
C50AC	ZV- Crown Vinyl Matt Emulsion with Teflon® Surface Protector	12,295	2,459	738		
C05AE	ZV- Crown Permaplast Long Life Exterior Emulsion	12,742	2,548	765		
C52AC	ZV- Crown Permacote Exterior Emulsion with Teflon® Surface Protector	14,965	2,993	898		
GLOSS & SEMI GLOSS FINISHES						
C08AA	Crown Super Gloss	12,955	2,591	777		
C09AA	Crown Eggshell Finish (Semi Gloss)	14,955	2,991	897		
ECONOMY RANGE						
C13AA	Economy Vesta Emulsion	2,914	583			
C13AC	Economy Vesta Plastic Tint Base	2,914	583			
C14AA	Economy Vesta Gloss (All Shades)	5,260	1,052	315	168	
C15AA	Economy Undercoat	5,260	1,052	315	168	
C16AA	Economy Varnish Clear		1,161	317	171	94
C16AB	Economy Varnish Stain		1,176	354	224	
C21AH	Economy Roof Paint - Red Oxide, Green, Cornflower		1,105	332		
C17AF	Economy Primer - Red Oxide & Grey		1,042	313	218	
C17AA	Economy Floor Paint - Red Oxide & Green		1,152	342		
C13AD	Vesta Regal - Emulsion Undercoat	2,451	490			



SPECIALIZED FINISHES-TEXTURES					
VARIATIONS		25 Kgs	5 Kgs		
C21AQ	Variations KETF 01-09, 11-14	6,905	1,381		
C21AQ	Bonding Agent (For Crown Variations Textured Finishes)		1,790		
RUFF N TUFF		30 Kgs	5 Kgs		
C21AN	Crown Ruff N Tuff	5,610	935		
C21BMRT	Crown Ruff N Tuff - Inbuilt Colours	6,300			
CROWN COLOUR CREATIONS		5 Kgs	1 Kg	0.5 Kg	
C21AL	Crown Colour Creations Basecoat	921			
C21AM	Crown Colour Creations Topcoat		1,734	995	
HI-BUILD TEXTURED FINISH		25 Kgs	5 Kgs		
C21AC	Crown Rockfast Hi-Build Textured Finish	8,880	1,776		
B21AC	Tartaruga Textured Coating	8,880	1,776		
STRONGHOLD TEXTURED FINISH		20 Ltrs	4 Ltrs	1 Ltr	
C21AK	Stronghold Textured Finish	12,926	2,585	776	
CROWN DUOTONE FINISH		5 Ltrs	4 Ltrs	1 Ltr	
C21AA	Crown Duotone Finish		3,545	1,068	
C21AB	Crown Duotone Waterphase	1,175	1,114	0.01	
CROWN METALLICA		4 Ltrs	1 Ltr	0.5 Ltr	
C21BJ	Crown Metallica Base Coat	5,156	1,313		
C21BH	Crown Metallica Top Coat		2,030	1,045	
CROWN GLASS PLASTER & GLASS VARIATION		25 Kgs	5 Kgs		
C21BK	Crown Glass Plaster	10,040	2,500		
C21BRV	Crown Glass Variation	8,300	1,750		
C21BVGB	Crown Stone Elegance	6,900	1,400		
WOOD FINISHES			5 Ltrs	1 Ltr	0.5 Ltr
C18AR	Crown Timber Master		2,800	640	
	Crown Two Pack Epoxy Varnish		6,734	2,020	
			4 Ltrs	1 Ltr	0.5 Ltr
C18AQ	Aquavar Varnish Clear		3,465	911	
C18AQ	Aquavar Varnish Colours		3,675	967	
C18AB	Crown Woodseal Polyurethane Varnish		2,791	838	472
C18AB	Crown Polyurethane Varnish High Gloss		2,791	838	472
C18AB	Crown Polyurethane Varnish - Matt		2,978	891	508
C18AF	Crown Two - Pack Polyurethane Clear Varnish		5,417	1,637	
C18AF	Crown Two - Pack Polyurethane - Matt/Satin Finish		5,805	1,741	
C25AJ	Crown Two Pack Epoxy Varnish		6,734	2,020	
C18AC	Crown Multi - Purpose Clear Varnish		2,003	602	343
C18AM	Crown Oil Varnish Stains (6 Shades)		2,090	630	358
			4 Ltrs	1 Ltr	0.5 Ltr
C18AL	Acid Catalysed Lacquer - Gloss		4,489	1,349	
C18AL	Acid Catalysed Lacquer - Satin		4,757	1,424	
C23AL	NC Sanding Sealer		3,169	954	537

ROOF & FLOOR PAINTS		20 Ltrs	4 Ltrs	1Ltr
C21AH	Roof Paint - Red Oxide	12,975	2,595	779
C21AH	Roof Paint - Green, Cornflower, Grey	16,015	3,203	962
C21AH	Crown Roof Master - Beetle Green, Red Oxide, Cornflower, Brick, White	18,240	3,648	1,120
C21AH	Roofdec (For Asphalt & Bitumen Coated Roofs)	13,325	2,665	799
C21AR	Crown Butyl Rubber Paint		3,279	
C21AJ	Concrete Floor Paint - Green & Others	15,055	3,011	904
C21AJ	Concrete Floor Paint Red Oxide	13,065	2,613	784
C21AI	Two Pack Epoxy Floor Paint Red Oxide		6,127	1,839
C21AI	Two Pack Epoxy Floor Paint - Green & Others		6,250	1,875

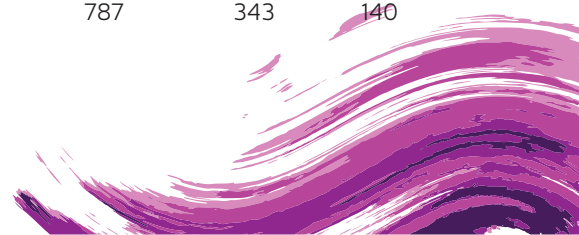
UNDERCOATS		20 Ltrs	4 Ltrs	1Ltr	0.5 Ltr
C19AA	Crown Universal Undercoat (Oil Based)	11,345	2,269	679	369
C19AB	Crown Acrylic Primer Sealer Undercoat	11,485	2,297	689	

PRIMERS		20 Ltrs	4 Ltrs	1 Ltr
C20AC	Crown Solo Plus 3 Masonry Primer	13,630	2,726	818
C20AB	Crown Aluminium Wood Primer		2,892	873
C20AA	Crown White Wood Primer		2,391	717
C20AF	Crown Penetrating Primer		2,232	673
C20AH	Crown Universal Alkali - Resisting Primer	14,705	2,941	881
C20AU	One Pack Etch Primer		3,593	1,073
C20AJ	Red Oxide (Pre-Fab) Primer/Finish Glossy		2,461	738
C20AJ	Red Oxide (Pre-Fab) Primer Matt		2,161	647
C20AK	Red Oxide Zinc Chromate Primer		2,665	799
C20AL	Zinc Chromate Primer Yellow		3,140	943
C20AL	Zinc Chromate Metal Primer Grey	13,325	2,665	799
C20AV	Chlorinated Rubber Zinc Chromate Primer		3,940	1,182
C20AP	Zinc Phosphate Primer - Grey		3,740	1,068
C20AV	Chlorinated Rubber Zinc Phosphate Primer		3,940	1,182
C20AQ	Chlorinated Rubber Zinc Rich Primer		4,667	1,463
C20AR	Crown Two Pack Epoxy Zinc Chromate/Red Oxide Primer		6,554	1,966
C20AS	Crown Two Pack Epoxy Zinc Phosphate Primer - Grey		6,628	
C20AQ	Crown Two Pack Epoxy Zinc Rich Primer		9,510	1,110
C20AQ	Zinc Rich Primer (Single Pack)		6,906	2,072

PUTTIES & FILLERS		40X0.5 Kgs	10X2.5 Kgs	1x25 Kgs	2.5 Kgs	0.5 Kg
		Carton	Carton	Box	Pack	Pack
C30AE	Crown Polyfilla	5,079	5,533	4,783	741	127
C17AC	Vesta Economy Polyfilla	2,322	2,517	1,937	253	61

C30AE (Quantity Carton Prices: Orders of 10 Cartons and Above)
(For Wood and Metal Casement Windows)

		40 Kgs	25 Kgs	8 Kgs	2 Kgs	1 Kg
C30AA	Crown Metal Putty	4,258	2,731	968	371	150
C30AC	OK Putty	4,109	2,441	838	163	120
C30AB	Wood Putty	3,457	2,321	787	343	140



		30 Kgs	20 Kgs	5 Kgs		
C30AD	Crown Wall Care Putty	3,012	2,008	520		
C30AG	Crown Gyplast		1,811			
C30AH	Crown Wallcare White Cement Putty (For Exterior Use)		3,568			
C30AK	WP Cement Putty		1,875			
C30AL	WP Rangeela Putty Green	3,120				
C30AL	WP Rangeela Putty Rose Pink, Yellow, Off White	2,771				
BODYFILLER		5 Kgs	2.5 Kgs	1 Kg		
C23AK	Duco Bodyfiller (NI)	2,063	1,065	530		
STRONGHOLD ADHESIVES		25 Kgs	20 Kgs	4 Kgs	1 Kg	0.5 Kg
C29AA	2502 Stronghold Wood Adhesive		5676	1003	319	193
C29AB	2507 Stronghold Tile Adhesive	5,857		1,003	319	193
C29AC	2530 Stronghold Parquet Adhesive	7,637	6,100	1,308	353	241
C29AD	2540 Bondcrete (Dual Purpose Concrete Binder)		7,310	1,462		
SOLFIX		1 Ltr	0.5 Ltr	0.25 Ltr	100 ml	
C29AF	Crown Solfix Pipe Solvent Cement	1,002	546	295	161	
SPECIALIZED COATINGS		20 Ltrs	4 Ltrs	1 Ltr	0.5 Ltr	
C12AA	GP Matt Finish - Black (For Wrought Iron)		2,669	798	440	
C12AA	School Board Paint - Black & Green		2,669	798	440	
C21AE	Crown Squash Court Paint		3,281	985		
C21AD	Crown Acrylic Tennis Court Paint	14,500	2,900	870		
C25AA	Chlorinated Rubber Paint (Standard Shades)		5,535	1,661		
C25AJ	Crown Two Pack Epoxy Enamel Clear		6,376	1,913		
C21AT	Aluminium (Leafing) Paint	22,880	4,576	1,379	745	
C25AE	Heat Resisting Aluminium (Up to 200° C)	26,290	5,258	1,577		
C21AT	Bituminous Aluminium Paint	19,480	3,896	1,169		
C21AS	Black Bituminous Paint	8,910	1,782	535		
C21AS	Bituminous Composition For Drinking Water Tanks	9,355	1,871	562		
B26AF	Two Pack Epoxy Coal Tar Composition		4,691	1,408		
DECORATIVE MISCELLANEOUS & SUNDRIES		20 Ltrs	5 Ltrs/4 Ltrs	1Ltr	0.5 Ltr	
C21AU	Silicone Water Proofing Solution	20,160	5,040	1,058		
C39AB	Fungicidal Wash	7,928	1,982	596		
C39AA	Mordant Solution / Passivating Wash	8,144	2,036			
C39AI	Crown Paint Remover		2,534	686	439	
C39AH	Rust Remover		2,280	617	395	
C39AG	Hymeg AD 12		4,280	946		
C21BC	Thermoline - Retro Reflective Hot Melt (25 Kgs) - White & Yellow	4,643				
C22AB	Ballotini Glass Beads (25 Kgs)	4,643				
C20AY	Thermoplastic Road Marking Primer		2,372			
C21AF	Crown Roadline Paint - White & Black	17,310	3,462	1,038		
C21AF	Crown Roadline Paint - Yellow	18,700	3,740	1,120		

THINNERS		20 Ltrs	5 Ltrs	1Ltr	0.5 Ltr
C27AA	White Spirit	5,948	1,487	445	242
C27AE	Thinner For Epoxy Paints	10,668	2,667	798	
C27AM	Thinner For Roadline Paint	7,256	1,814	542	
C27AD	Thinner For Two - Pack Polyurethane	13,488	3,372	1,012	
C27AC	Thinner For Acid Catalysed Lacquer	10,228	2,557	768	
C27AF	Thinner For Chlorinated Rubber	7,076	1,769	529	
C27AO	Thinner For Hymeg AD12		1,736	520	

PAINT BRUSHES		Size	Price
C31AA	Standard Brushes	1/2"	72
		3/4"	81
		1"	87
		1 1/2"	90
		2"	124
		2 1/5"	177
		3"	214
		4"	267
		5"	373
		6"	431

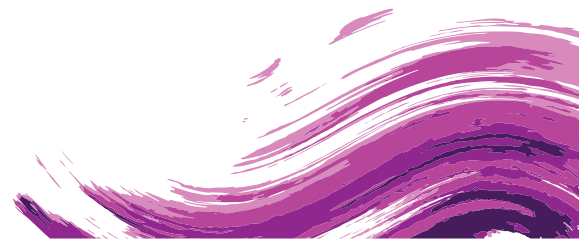
		Size	Price
C391AA	Paint Brushes Green Tip	1/2"	127
		3/4"	143
		1"	153
		1 1/2"	299
		2"	500
		2 1/5"	599
		3"	724
		4"	774
		5"	911
		6"	1,167

ROLLERS		9 Inch	7 Inch
C31AB	9" High Quality Textured Roller with Tray	2,577	
C31AB	9" High Quality Textured Roller - without Tray	1,470	
C31AB	7" Quick Coater Roller with Tray		2,137
C31AB	7" Quick Coater Roller without Tray		775
C31AB	9" Quick Coater Roller with Tray	2,493	
C31AB	9" Quick Coater Roller without Tray	904	

APPLICATION TOOLS FOR SPECIALIZED FINISHES		1 Piece
C31AB	Stainless Steel Trowel For Ruff n' Tuff & Colour Creations	3,043

TERMS & CONDITIONS

1. All prices are in Kenya Shillings subject to VAT
2. This price list applies to goods delivered or collected within Nairobi
3. For deliveries outside Nairobi, an additional transport charge of 4.5% shall be applicable
4. This price list cancels all the previous price lists
5. All the disputes arising in connection with this price list are subject to Nairobi Jurisdiction





If you like it... Crown it!

HEAD OFFICE

CROWN PAINTS KENYA LIMITED

P.O. Box 78848 - 00507
LIKONI ROAD, INDUSTRIAL AREA
NAIROBI, KENYA
TEL: 020 6533604-12, 2165703/5/6, 2032751
EMAIL: info@crownpaints.co.ke, sales@crownpaints.co.ke

DEPOTS AND BRANCH OFFICES - KENYA

AUTOMOTIVE DIVISION

CROWN PAINTS KENYA LIMITED
P.O. Box 18112 – 00500
Dar es Salaam Road, Nairobi, Kenya
TEL: +254 20 6651331/2, 3524356
EMAIL: autopaints@crownpaints.co.ke

CROWN PAINTS KISUMU

P.O. Box 2001 - 40100
Lowe Ogada Street, Kisumu, Kenya
TEL: +254 2024949/2024267/2024117
EMAIL: kisumu@crownpaints.co.ke

CROWN PAINTS MERU

Nanyuki Highway,
Next to Associated Motors,
Meru, Kenya
TEL: +254 20 2001251
EMAIL: meru@crownpaints.co.ke

CONSTRUCTION SECTOR

CROWN PAINTS KENYA LIMITED
2nd Floor Muthithi Place, Muthithi Road,
Westlands, Nairobi, Kenya
TEL: +254 20 2349563, 2349565
MOBILE: +254 709 887000
EMAIL: westlandsshowroom@crownpaints.co.ke

CROWN PAINTS MOMBASA

P.O. Box 84246 – 80100
Gusii Street, Off Digo Road, Mombasa, Kenya
TEL: +254 41 2314777-8 / 2220412 / 6292 / 8762
MOBILE: +254 790 659935
EMAIL: mombasa@crownpaints.co.ke

CROWN DÉCOR WORLD - KENYA

LAVINGTON

1st Floor Lavington Curve Mall, Nairobi
El Molo Drive, James Gichuru Road
MOBILE: +254 721 885488, 0722 985171

NYALI

Nyali Centre, Links Road, Mombasa
MOBILE: +254 711 957449
EMAIL: nyalishowroom@crownpaints.co.ke

ELDORET

Eagle Hardware, 1st Floor,
Sosian Street, Eldoret
TEL: +254 53 2033679 / 2032797
EMAIL: eldoretshowroom@crownpaints.co.ke

KAREN

Ground Floor, Symbion House, Nairobi
Dagoretti Road next to The Hub
MOBILE: +254 715 361027
EMAIL: karenshowroom@crownpaints.co.ke

MERU

Nanyuki Highway,
Next to Associated Motors, Meru
TEL: +254 20 2001251
EMAIL: merushowroom@crownpaints.co.ke

NAKURU

Ground Floor, Westside Mall,
Kenyatta Avenue, Nakuru
MOBILE: +254 720 408490
EMAIL: nakurushowroom@crownpaints.co.ke

EAST AFRICA OPERATIONS

DAR ES SALAAM, TANZANIA

Mac One Plaza, Nyerere Road, Tazara,
Dar es Salaam, Tanzania
TEL: +255 769 482285, 745 200299
EMAIL: darsales@crownpaints.co.tz

KIGALI, RWANDA

Warehouse No. 1, Yara Warehouse, Free Trade Zone SEZ,
Rwanda Estate Ltd, Gasabo District,
Kigali, Rwanda
MOBILE: +250 788 387440
EMAIL: sales@crownpaints.co.rw

ARUSHA, TANZANIA

Plot No. 33-36, Block E, Unga Ltd,
Factory Area, Arusha, Tanzania
TEL: +255 272 545192, 786 300861, 753 115551
EMAIL: sales@crownpaints.co.tz

REGAL PAINTS UGANDA LTD

P.O. Box - 31663
6th Street, Industrial Area – Kampala-Uganda
TEL: +256 41 4288449, 752 228951, 752 228918
FAX: +256 414 288 453
EMAIL: info@regalpaints.co.ug, sales@regalpaints.co.ug
WEBSITE: www.regalpaints.co.ug

CALL CENTRE: +254 703 333 777/ +254 709 887 000 · WEBSITE: www.crownpaints.co.ke

