



If you like it... Crown it!

# DECORATIVE PRODUCTS PRICE LIST

WITH EFFECT FROM  
01.09.2017

VERSION 1

DOWNLOAD



COLOUR APP



## DECORATIVE

PRODUCT CODE	PRODUCT	PACK				
<b>PREMIUM EMULSION FINISHES - EXTERIOR</b>		<b>20Ltrs</b>	<b>4Ltrs</b>	<b>1Ltr</b>		
C61AA	Crown Permacote Ultra Guard with Silicone	14,595	2,919	893		
C05AA	Crown Permaplast Long Life Exterior Emulsion	13,375	2,675	803		
C52AA	Crown Permacote Exterior Emulsion with Teflon Surface protector	15,715	3,143	943		
<b>PREMIUM EMULSION FINISHES - INTERIOR</b>		<b>20Ltrs</b>	<b>4Ltrs</b>	<b>1Ltr</b>		
C50AA	Crown Vinyl Matt Emulsion with Teflon Surface protector	12,910	2,582	775		
C01AA	Crown Vinyl Luxury Matt Emulsion	11,540	2,308	693		
C03AA	Crown Silk Vinyl Emulsion	12,370	2,474	742		
C03AD	Crown Medicryl Emulsion	13,390	2,678			
C02AA	Crown Covermatt Emulsion	6,250	1,250	375		
C06AC	Crown Covermatt +2 Emulsion	6,685	1,252	401		
C07AC	Crown Transeal - Acrylic Clear Finish (Brick, Stone, Quarry Tiles etc)	6,685	1,337	589		
C07AB	Crown Echo Binder	5,410	1,082			
<b>ZERO VOC EMULSION FINISHES - INTERIOR &amp; EXTERIOR</b>		<b>20Ltrs</b>	<b>4Ltrs</b>	<b>1Ltr</b>		
C01AF	ZV - Crown Vinyl Luxury Matt Emulsion	11,540	2,308	693		
C03AE	ZV - Crown Silk Vinyl Emulsion	12,370	2,474	742		
C50AC	ZV - Crown Vinyl Matt Emulsion with Teflon Surface Protector	12,910	2,582	775		
C05AE	ZV - Crown Permaplast Long Life Exterior Emulsion	13,375	2,675	803		
C52AC	ZV - Crown Permacote Exterior Emulsion with Teflon Surface Protector	15,715	3,143	943		
<b>GLOSS &amp; SEMI GLOSS FINISHES</b>		<b>20Ltrs</b>	<b>4Ltrs</b>	<b>1Ltr</b>		
C08AA	Crown Super Gloss	13,605	2,721	816		
C09AA	Crown Eggshell Finish (Semi Gloss)	15,705	3,141	942		
<b>ECONOMY RANGE</b>		<b>20Ltrs</b>	<b>4Ltrs</b>	<b>1Ltr</b>	<b>0.5Ltr</b>	<b>0.25Ltr</b>
C13AA	Economy Vesta Emulsion	3,060	612			
C14AA	Economy Vesta Gloss (All Shades)	5,525	1,105	331	176	
C15AA	Economy Undercoat	5,525	1,105	331	176	
C16AA	Economy Varnish Clear		1,219	333	180	99
C16AB	Economy Varnish Stain		1,235	372		
C21AH	Economy Roof Paint - Red Oxide, Green, Cornflower		1,160	349		
C17AF	Economy Primer - Red Oxide & Grey		1,094	329		
C17AA	Economy Floor Paint - Red Oxide & Green		1,210	359		
C13AD	Vesta Regal - Emulsion Undercoat	2,575	515			



<b>SPECIALIZED FINISHES - TEXTURES</b>					
<b>VARIATIONS</b>		<b>25Kgs</b>	<b>5Kgs</b>		
C21AQ	Variations KETF 01-09, 11-14	7,250	1,450		
C21AQ	Bonding Agent (For Crown Variations Textured Finishes)		1,880		
<b>RUFF N' TUFF</b>		<b>30Kgs</b>	<b>5Kgs</b>		
C21AN	Crown Ruff N' Tuff	5,892	982		
C21BMRT	Crown Ruff N' Tuff - Inbuilt Colors	6,611			
<b>CROWN COLOUR CREATIONS</b>		<b>5Kgs</b>	<b>1Kg</b>	<b>0.5Kg</b>	
C21AL	Crown Colour Creations Base Coat	1,015			
C21AM	Crown Colour Creations Top Coat		1,821	1,045	
<b>HI - BUILD TEXTURED FINISH</b>		<b>25Kgs</b>	<b>5Kgs</b>		
C21AC	Crown Rockfast Hi - Build Textured Finish	9,325	1,865		
<b>STRONGHOLD TEXTURED FINISH</b>		<b>20Ltrs</b>	<b>4Ltrs</b>	<b>1Ltr</b>	
C21AK	Stronghold Textured Finish	13,570	2,714	814	
<b>CROWN DUOTONE FINISH</b>		<b>5Ltrs</b>	<b>4Ltrs</b>	<b>1Ltr</b>	
C21AA	Crown Duotone Finish		3,722	1,121	
C21AB	Crown Duotone Waterphase	1,234	1,170	351	
<b>CROWN METALLICA</b>		<b>4Ltrs</b>	<b>1Ltr</b>	<b>0.5Ltr</b>	
C21BJ	Crown Metallica Base Coat	5,414	1,379		
C21BH	Crown Metallica Top Coat		2,239	1,152	
<b>CROWN GLASS PLASTER &amp; GLASS VARIATION</b>		<b>25Kgs</b>	<b>5Kgs</b>		
C21BK	Crown Glass Plaster	13,125	2,625		
C21BRV	Crown Glass Variation	9,190	1,838		
C21BVGB	Crown Stone Elegance	7,350	1,470		
<b>WOOD FINISHES</b>			<b>4Ltrs</b>	<b>1Ltr</b>	<b>0.5Ltr</b>
C18AR	Crown Timber Master		2,940	672	
C18AQ	Aquavar Varnish Clear		3,638	957	
C18AQ	Aquarvar Varnish Colours		3,859	1,015	
C18AB	Crown Woodseal Polyurethane Varnish		2,931	880	496
C18AB	Crown Polyurethane Varnish High Gloss		2,931	880	496
C18AB	Crown Polyurethane Varnish - Matt		3,127	936	533
C18AF	Crown Two - Pack Polyurethane Clear Varnish		5,688	1,719	
C18AF	Crown Two - Pack Polyurethane - Matt/Satin Finish		6,095	1,828	
C25AJ	Crown Two Pack Epoxy Varnish		7,071	2,121	
C18AC	Crown Multi - Purpose Clear Varnish		2,103	632	360
C18AM	Crown Oil Varnish Stains (6 Shades)		2,194	662	376
C18AH	Crown Ronseal Hardglaze		3,787	947	542
C18AL	Acid Catalysed Lacquer - Gloss		4,713	1,416	
C18AL	Acid Catalysed Laquer - Satin		4,995	1,495	
C23AL	NC Sanding Sealer		3,327	1,002	564

ROOF & FLOOR PAINTS		20Ltrs	5Ltrs	1Ltr
C21AH	Roof Paint - Red Oxide	13,625	2,725	818
C21AH	Roof Paint - Green, Cornflower, Grey	16,815	3,363	1,010
C21AH	Crown Roof Master - Beetle Green, Red Oxide, Cornflower, Brick, White	19,150	3,830	1,176
C21AH	Roofdec (For Asphalt & Bitumen Coated Roofs)	13,990	2,798	839
C21AR	Crown Butyl Rubber Paint		3,443	
C21AJ	Concrete Floor Paint - Green & Others	15,810	3,162	949
C21AJ	Concrete Floor Paint Red Oxide	13,720	2,744	823
C21AI	Two Pack Epoxy Floor Paint Red Oxide		6,433	1,931
C21AI	Two Pack Epoxy Floor Paint - Green & Others		6,563	1,969

UNDERCOATS		20Ltrs	4Ltrs	1Ltr
C19AA	Crown Universal Undercoat (Oil based)	11,910	2,382	713
C19AB	Crown Acrylic Primer Sealer Undercoat	12,060	2,412	724

PRIMERS		20Ltrs	4Ltrs	1Ltr
C20AC	Crown Solo Plus 3 Masonary Primer	14,310	2,862	859
C20AB	Crown Aluminium Wood Primer		3,037	917
C20AA	Crown White Wood Primer		2,511	753
C20AF	Crown Penetrating Primer		2,344	707
C20AH	Crown Universal Alkali - Resisting Primer	15,440	3,088	925
C20AU	One Pack Etch Primer		3,773	1,127
C20AJ	Red Oxide (Pre - Fab) Primer Glossy		2,584	775
C20AJ	Red Oxide (Pre - Fab) Primer Matt		2,269	679
C20AK	Red Oxide Zinc Chromate Primer		2,798	839
C20AL	Zinc Chromate Primer Yellow		3,297	990
C20AV	Chlorinated Rubber Zinc Chromate Primer		4,688	1,405
C20AP	Zinc Phosphate Primer - Grey		3,927	1,121
C20AV	Chlorinated Rubber Zinc Phosphate Primer		4,137	1,240
C20AQ	Chlorinated Rubber Zinc Rich Primer		4,900	1,536
C20AR	Crown Two Pack Epoxy Zinc Chromate/ Red Oxide Primer		6,882	2,064
C20AS	Crown Two Pack Epoxy Zinc Phosphate Primer - Grey		6,959	2,087
C20AQ	Crown Two Pack Epoxy Zinc Rich Primer		10,597	3,146
C20AQ	Zinc Rich Primer (Single Pack)		7,251	2,176

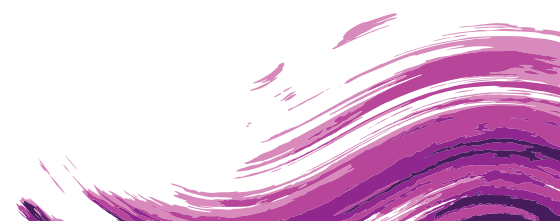


<b>PUTTIES &amp; FILLERS</b>		<b>40x0.5Kgs</b>	<b>10x2.5Kgs</b>	<b>1x25Kgs</b>	<b>2.5Kg</b>	<b>0.5Kgs</b>		
		<b>Carton</b>	<b>Carton</b>	<b>Box</b>	<b>Pack</b>	<b>Pack</b>		
C30AE	Crown Polyfilla	5,333	5,810	5,022	778	133		
C17AC	Vesta Economy Polyfilla	2,438	2,643	2,034	266	64		
C30AE	(Quantity Carton Prices: Orders of 10 cartons and above)							
	(For wood and metal casement windows)							
		<b>40Kgs</b>	<b>25Kgs</b>	<b>8Kgs</b>	<b>2Kgs</b>	<b>1Kg</b>		
C30AA	Crown Metal Putty	4,471	2,868	1,016	390	158		
C30AC	OK Putty	4,314	2,563	880	171	126		
C30AB	Wood Putty	3,630	2,437	826	360	147		
		<b>30Kgs</b>	<b>20Kgs</b>	<b>5Kgs</b>				
C30AD	Crown Wall Care Putty	3,163	2,108	546				
C30AG	Crown Gyplast		1,902					
C30AH	Crown Wallcare White Cement Putty (for Exterior Use)		3,746					
<b>BODYFILLER</b>		<b>5Kgs</b>	<b>2.5Kgs</b>	<b>1Kg</b>				
C23AK	Duco Bodyfiller (NI)	2,558	1,335	607				
<b>STRONGHOLD ADHESIVES</b>		<b>25Kgs</b>	<b>20Kgs</b>	<b>4Kgs</b>	<b>1Kg</b>	<b>0.5Kg</b>		
C29AA	2502 Stronghold Wood Adhesive		5,960	1,053	335	203		
C29AB	2507 Stronghold Tile Adhesive	6,150		1,053	335	203		
C29AC	2530 Stronghold Parquet Adhesive	8,019	6,405	1,373	371	253		
C29AD	2540 Bondcrete (Dual Purpose Concrete Binder)			1,535				
<b>SOLFIX</b>					<b>1Ltr</b>	<b>0.5Ltr</b>	<b>0.25Ltr</b>	<b>100ml</b>
C29AF	Crown Solfix Pipe Solvent Cement				1,052	573	310	169
<b>SPECIALIZED COATINGS</b>		<b>20Ltrs</b>	<b>4Ltrs</b>	<b>1Ltr</b>	<b>0.5Ltr</b>			
C12AA	GP Matt Finish - Black (For Wrought Iron)		2,802	838	880			
C12AA	School Board Paint - Black & Green		2,802	838	880			
C21AE	Crown Squash Court Paint		3,445	1,034				
C21AD	Crown Acrylic Tennis Court Paint	15,225	3,045	917				
C25AA	Chlorinated Rubber Paint (Standard Shades)		5,812	1,744				
C25AJ	Crown Two Pack Epoxy Enamel Clear		6,695	2,009				
C21AT	Aluminium (Leafing) Paint	24,025	4,805	1,441	782			
C25AE	Heat Resisting Aluminium (up to 200 C)	27,605	5,521	1,656				
C21AT	Bituminous Aluminium Paint	20,455	4,091	1,226				
C21AS	Black Bituminous Paint	9,825	1,965	590				
C21AS	Bituminous Composition For Drinking Water Tanks	9,825	1,965	590				
B26AF	Two Pack Epoxy Coal Tar Composition		4,926	1,478				

DECORATIVE MISCELLANEOUS & SUNDRIES		20Ltrs	5Ltrs	1Ltr	0.5Ltr
C21AU	Silicone Water Proofing Solution	21,168	5,292	1,111	
C39AB	Fungicidal Wash	8,324	2,081	626	
C39AA	Mordant Solution/Passivating Wash		2,138	642	
C39AI	Crown Paint & Varnish Remover		2,881	860	469
C39AH	Rust Remover		2,794	838	456
C39AG	Hymeg AD 12		4,719		
C21BC	Thermoline - Retroreflective Hot Melt (25Kgs) - White & Yellow	5,625			
C22AB	Ballotini Glass Beads (25Kgs)	5,625			
C20AY	Thermoplastic Road Marking Primer		2,491		
C21AF	Crown Roadline Paint - White & Black	18,175	3,635	1,089	
C21AF	Crown Roadline Paint - Yellow	19,635	3,927	1,120	

THINNERS		20Ltrs	5Ltrs	1Ltr	0.5Ltr
C27AA	White Spirit	6,244	1,561	467	254
C27AE	For Epoxy Paints	11,200	2,800	838	
C27AM	For Roadline Paint	7,620	1,905	569	
C27AD	For Two - Pack Polyurethane	14,164	3,541	1,063	
C27AC	For Acid Catalysed Lacquer	10,739	2,684	806	
C27AF	For Chlorinated Rubber	7,428	1,857	555	
C27AO	Hymeg Thinner	7,292	1,823		

PAINT BRUSHES		Size	Price
C31AA	Paint Brushes Plain Handle	1/2"	76
		3/4"	85
		1"	91
		1 1/2"	95
		2"	130
		2 1/5"	186
		3"	225
		4"	280
		5"	392
	6"	453	



		Size	Price
C391AA	Paint Brushes Green Tip	1/2"	133
		3/4"	150
		1"	161
		1 1/2"	314
		2"	525
		2 1/5"	629
		3"	760
		4"	813
		5"	957
		6"	1,225

	ROLLERS	9 Inch	7 Inch
C31AB	9" High Quality Textured Roller - With Tray	2,706	
C31AB	9" High Quality Textured Roller - Ordinary	1,668	
C31AB	Quick Coater Roller - With Tray	2,618	2,244
C31AB	9" Textured Roller - Ordinary	1,544	1,221

	APPLICATION TOOLS FOR SPECIALIZED FINISHES	1 Piece	
C31AB	Stainless Steel Trowel For Ruff N' Tuff & Colour Creations	3,195	
C31AB	Textured Roller - Without Tray	2,237	
C31AB	Quick Coater Roller - With Tray	3,195	
C31AB	Quick Coater Roller - Without Tray	6,318	

#### TERMS & CONDITIONS

1. All prices are in Kenya Shillings subject to VAT
2. This price list applies to goods delivered or collected within Nairobi
3. For deliveries outside Nairobi, an additional transport charge of 4.5% shall be applicable
4. This price list cancels all the previous price lists
5. All the disputes arising in connection with this price list are subject to Nairobi Jurisdiction



If you like it... Crown it!

# DECORATIVE PRODUCTS BASES & COLOURANTS PRICE LIST

WITH EFFECT FROM  
01.09.2017

VERSION 1

DOWNLOAD



COLOUR APP





## DECORATIVE - BASES & COLORANTS

PRODUCT CODE	PRODUCT	PACK		
<b>BASES</b>		<b>20Ltrs</b>	<b>4Ltrs</b>	<b>1Ltr</b>
C52AB	Crown Permacote Emulsion with Teflon Surface protector - Bases	14,885	2,977	894
C01AC	Crown Vinyl Luxury Matt Emulsion - Bases	10,965	2,193	658
C50AB	Crown Vinyl Matt Emulsion Teflon Surface protector - Bases	12,270	2,454	736
C03AC	Crown Silk Vinyl Emulsion - Bases	11,745	2,349	705
C61AB	Crown Permacote Ultra Guard with Silicone - Bases	13,545	2,709	683
C05AB	Crown Permaplast Long Life Exterior Emulsion - Bases	12,710	2,542	763
C08AC	Crown Super Gloss - Bases	12,920	2,584	775
C09AC	Crown Eggshell Finish (Semi Gloss) - Bases	14,920	2,984	896
C18AQ	Aquavar WB Clear Base		3,675	957
	Economy Vesta Plastic Tint Base	3,060	612	
		<b>30Kgs</b>	<b>5Kgs</b>	
C21BN	Crown Ruff N' Tuff - Base	4,778	796	
<b>COLORANTS</b>		<b>1Ltr</b>		
C32AA	XALF Universal Colorant Light FAST YELLOW	882		
C32AA	XAT Universal Colorant MEDIUM YELLOW	485		
C32AA	XA Xeracolor BRIGHT YELLOW	408		
C32AA	XB Xeracolor BLACK	122		
C32AA	XBPA Xeracolor High Strength BRIGHT YELLOW	695		
C32AA	XBPH Xeracolor BRIGHT RED	695		
C32AA	XC Xeracolor YELLOW OXIDE	154		
C32AA	XD Xeracolor PHTHALO GREEN	232		
C32AA	XE Xeracolor PHTHALO BLUE	176		
C32AA	XF Xeracolor RED OXIDE	221		
C32AA	XG Xeracolor BRIGHT ORANGE	607		
C32AA	XHP Xeracolor PERMANENT RED	419		
C32AA	XJ Xeracolor VIOLET	265		
C32AA	XK Xeracolor WHITE	243		
C32AA	XL Xeracolor RAW AMBER	320		
C32AA	XM Xeracolor MAGENTA	805		

### TERMS & CONDITIONS

1. All prices are in Kenya Shillings subject to VAT
2. This price list applies to goods delivered or collected within Nairobi
3. For deliveries outside Nairobi, an additional transport charge of 4.5% shall be applicable
4. This price list cancels all the previous price lists
5. All the disputes arising in connection with this price list are subject to Nairobi Jurisdiction





If you like it... Crown it!

# AUTOMOTIVE PRODUCTS PRICE LIST

WITH EFFECT FROM  
01.09.2017

VERSION 1

DOWNLOAD



COLOUR APP



## AUTOMOTIVE

PRODUCT CODE	PRODUCT	PACK		
<b>DUCO 2K ACRYLIC</b>				
B23AA	White, Black & Clear	4Ltrs	1Ltr	0.5Ltr
B23AA	As Per given Sample	4,458	1,337	
B23AA	As Per given Sample	5,857	2,581	
<b>DUCO 2K TONERS</b>				
B23AA	Yellow Oxide, Mid Chrome Yellow, Red Oxide, Chrome Orange, Lemon Chrome	4,742	1,423	811
B23AA	Permanent Violet	6,945	2,085	1,187
B23AA	Permanent Blue, Permanent Green, Permanent Bordeaux, Permanent Maroon, Permanent Green, Permanent Red	5,171	1,552	884
<b>DUCO 2K PRIMER &amp; HARDENER</b>				
B23AA	Primer Surfacer - Yellow/Beige	3,530	1,060	
B23AA	2k Acrylic Hardener (Mixing Ratio, 1 Part hardener To 4 parts Enamel By Volume)		1,891	456
<b>DUCO CELLULOSE</b>				
C23AB	White, Black, Clear	2,917	876	499
C23AB	As Per given Sample	4,043	1,213	654
C23AB	Black Matt Cellulose	2,450	714	418
<b>DUCO CELLULOSE TONERS</b>				
C23AB	Yellow Oxide, Lemon Yellow, Mid Chrome Yellow	4,161	1,248	710
C23AB	Red Oxide, Chrome Orange	4,161	1,248	710
C23AB	Permanent Green, Permanent Blue, Permanent Red	4,311	1,295	736
C23AB	Permanent Crimson, Permanent Maroon	4,311	1,295	736
C23AB	Permanent Violet	6,945	2,085	1,182
C23AB	Duco Polychromatic Aluminium	4,475		765
<b>DUCO CELLULOSE PRIMER &amp; CHASSIS BLACK</b>				
C23AB	Duco Chasis Black	2,905	873	
C23BK	Primer/Surfacer Grey	2,519	755	432
B23BM	Duco Etch Primer - Base	3,233	970	
B23BM	Duco Etch Primer - Activator (Mixing Ratio 50/50 by Volume)	1,592	478	
<b>DUCO FAST DRY</b>				
C23AC	White, APS White, Black & Clear	2,371	711	358
C23AC	As Per given Sample	2,371	711	358

<b>DUCO FAST DRY TONERS</b>		<b>4Ltrs</b>	<b>1Ltr</b>	<b>0.5Ltr</b>
C23AC	Garnet Maroon, Permanent Green, Permanent Blue, Scarlet Chrome, Yellow Oxide, Red Oxide, Mid Chrome Yellow, Lemon Chrome	2,371	711	358

<b>MISCELLANEOUS DUCO RANGE</b>		<b>4Ltrs</b>	<b>1Ltr</b>	<b>0.5Ltr</b>
C23AE	Duco Spot Putty	2,519	756	432
C23AF	Duco Rubbing Compound	1,707	512	293
C39AI	Paint Remover	2,661	720	461
B39AH	Rust Remover	2,394	648	415

<b>AUTOMOTIVE THINNERS</b>		<b>20Ltrs</b>	<b>5Ltrs</b>	<b>1Ltr</b>
B23AZ	Hi - Gloss Thinner	7,890	1,972	492
B23BA	Standard Thinner	6,899	1,724	432
B23BC	2K Acrylic Thinner		2,055	513
C23BB	Duco Fast Dry Thinners		1,698	424

<b>BODYFILLER</b>		<b>5Kgs</b>	<b>2.5Kgs</b>	<b>1Kg</b>
C23AK	Duco Bodyfiller (NI)	2,166	1,118	557

#### TERMS & CONDITIONS

1. All prices are in Kenya Shillings subject to VAT
2. This price list applies to goods delivered or collected within Nairobi
3. For deliveries outside Nairobi, an additional transport charge of 4.5% shall be applicable
4. This price list cancels all the previous price lists
5. All the disputes arising in connection with this price list are subject to Nairobi Jurisdiction



If you like it... Crown it!

# ADHESIVE PRODUCTS PRICE LIST

WITH EFFECT FROM  
01.09.2017

VERSION 1

DOWNLOAD



COLOUR APP



## PIDILITE PRODUCTS ADHESIVE PRODUCT RANGE

PRODUCT CODE	PRODUCT	PACK					
		5Kgs	2Kgs	1Kg	500g	250g	125g
C57AF	Fevicol Hiper	2,350	958	493	263	156	89
		<b>200Kgs</b>	<b>30Kgs</b>	<b>3.5Kgs</b>	<b>900g</b>	<b>450g</b>	<b>250g</b>
C57AG	Bulbond WK	37,926	6,995	857	231	139	53
		<b>20Ltrs</b>	<b>4Ltrs</b>	<b>3.8Ltrs</b>	<b>1Ltr</b>	<b>500ml</b>	<b>200ml</b>
C58AE	Fevicol CA 777	10,250	2,750	2,451	685	359	177
		<b>20Ltrs</b>	<b>4Ltrs</b>				
C57AL	Crown Foamfix	7,130	1,645				
		<b>50Kgs</b>	<b>30Kgs</b>				
C57AA	Fevicol SH	17,169	10,984				
		<b>25Kgs</b>	<b>1.1Kgs</b>	<b>750ml</b>	<b>500g</b>	<b>200g</b>	<b>125g</b>
C57AC	Fevicol 1k PUR		1,742		990		386
C57AL	Fevicol Wallfix					416	
C57AJ	USPRO Foam			903			
C57AH	Fevicol Hotmelt 388	19,088					
		<b>500ml</b>	<b>200ml</b>	<b>100g</b>	<b>20g</b>	<b>4g</b>	<b>3g</b>
C58AB	M Seal Super Putty				33		
C58AA	M Seal GP			89			
C58AD	Fevicol Superglue						23
C58AD	Fevicol Super Glue Max Gross 4G					20	
C58AC	M Seal Heavy Bodied Solvent Cement	505	241				
		<b>10Yd Roll</b>					
C58AF	Steelgrip Tape 0.7 in x 10yds (Black)	32					
		<b>50ml</b>					
C57AK	Uni - tint	72					

### TERMS & CONDITIONS

1. All prices are in Kenya Shillings subject to VAT
2. This price list applies to goods delivered or collected within Nairobi
3. For deliveries outside Nairobi, an additional transport charge of 4.5% shall be applicable
4. This price list cancels all the previous price lists
5. All the disputes arising in connection with this price list are subject to Nairobi Jurisdiction



If you like it... Crown it!

# DR. FIX IT WATERPROOFING PRODUCTS PRICE LIST

WITH EFFECT FROM  
01.09.2017

VERSION 1

DOWNLOAD



COLOUR APP



## DR. FIX IT WATER PROOFING PRODUCT RANGE

		25Kgs	20Kgs/ Ltrs	15Kgs	12Kgs	5Kgs	1.5Kgs	1Kg/Ltr
C62AF	Dr. Fixit Pidicrete URP		12,777			3,401		718
C62AM	Dr. Fixit Polypus	5,913						
C62AE	Dr. Fixit Crack X Powder						394	

		20Ltrs	5Kgs	1Ltr/Kg	500g	280ml	200ml
C62AB	Dr. Fixit Powder Waterproof				95		
C62AC	Dr. Fixit Pidiproof LW+	4,804		321			80
C62AD	Dr. Fixit Dampguard			1,226			
C62AT	Dr. Fixit Super Latex		3,194	696			
C62AJ	Dr. Fixit 501 Silicone Sealant GPS - Clear					357	

		25Kgs	15Kgs	12Kgs
C62AG	Dr. Fixit Pidotop 333	1,541		
C62AH	Dr. Fixit Fastflex			5,607
C62AR	Dr. Fixit Pidifin 2K		4,985	

		10Mtr Roll
C62AA	Dr. Fixit Gapseal Tape 50mm x 10mtr	795







If you like it... Crown it!

# DECORATIVE PRODUCTS ITALIA SERIES PRICE LIST

WITH EFFECT FROM  
01.09.2017

VERSION 1

DOWNLOAD



COLOUR APP



## ITALIA SERIES

ITEM NO.	ITEM DESCRIPTION	PACKS (LITRES)	DEALER PRICE
<b>CROWN ITALIA WOW NEUTRAL COATS/TOP COATS</b>			
C73AA1260D	CROWN ITALIA WOW Neutral Coat White 1Lt	1	2,925
C73AA1260H	CROWN ITALIA WOW Neutral Coat White 4Lt	4	11,325
C73AC1480D	CROWN ITALIA WOW Neutral Coat Gold 1Lt	1	2,925
C73AC1480H	CROWN ITALIA WOW Neutral Coat Gold 4Lt	4	11,325
<b>CROWN ITALIA UNO NEUTRAL COATS/TOP COATS</b>			
C73AF1260D	CROWN ITALIA UNO Neutral Coat White 1Lt	1	2,925
C73AF1260H	CROWN ITALIA UNO Neutral Coat White 4Lt	4	11,325
<b>CROWN ITALIA UNO PLUS NEUTRAL COATS/TOP COATS</b>			
C73AG1260D	CROWN ITALIA UNO PLUS Neutral Coat White 1Lt	1	2,925
C73AG1260H	CROWN ITALIA UNO PLUS Neutral Coat White 4Lt	4	11,325
<b>CROWN ITALIA DUE NEUTRAL COATS/TOP COATS</b>			
C73AB1528D	CROWN ITALIA DUE Neutral Coat 100 Lucca Blue 1Lt	1	3,510
C73AB1528H	CROWN ITALIA DUE Neutral Coat 100 Lucca Blue 4Lt	4	12,458
C73AB1531D	CROWN ITALIA DUE Neutral Coat 200 Arezzo Yellow 1Lt	1	3,510
C73AB1531H	CROWN ITALIA DUE Neutral Coat 200 Arezzo Yellow 4Lt	4	12,458
C73AB1522D	CROWN ITALIA DUE Neutral Coat 300 Grosseto Red 1Lt	1	3,510
C73AB1522H	CROWN ITALIA DUE Neutral Coat 300 Grosseto Red 4Lt	4	12,458
C73AB1523D	CROWN ITALIA DUE Neutral Coat 400 Livorno Grey 1Lt	1	3,510
C73AB1523H	CROWN ITALIA DUE Neutral Coat 400 Livorno Grey 4Lt	4	12,458
C73AB1310D	CROWN ITALIA DUE Neutral Coat 600 Pisa Green 1Lt	1	3,510
C73AB1310H	CROWN ITALIA DUE Neutral Coat 600 Pisa Green 4Lt	4	12,458
<b>PRIMERS</b>			
C73AD0000D	CROWN ITALIA PRIMER 1L	1	1,054
C73AD0000H	CROWN ITALIA PRIMER 4L	4	4,216
<b>PEARL PIGMENTS/GLITTER</b>			
ITEM NO.	ITEM DESCRIPTION	POUCHES (GRAMS)	DEALER PRICE
C73AE1480BW	CROWN ITALIA KW 205 Gold Pearl Pigment - 01 (80 grams)	80	876
C73AE0199BW	CROWN ITALIA KW 219 Purple (Voilet) Pearl Pigment - 02 (80 grams)	80	876
C73AE0951BW	CROWN ITALIA KW 225 Blue Pearl Pigment - 03 (80 grams)	80	876
C73AE2060BW	CROWN ITALIA KW 215 Red Pearl Pigment - 04 (80 grams)	80	876
C73AE1310BW	CROWN ITALIA KW 235 green Pearl Pigment - 05 (80 grams)	80	876
C73AE1060BW	CROWN ITALIA KW 217 Copper (Orange) Pearl Pigment - 06 (80 grams)	80	876
C73AEGC001BW	CROWN ITALIA SupGlitter g C001 (100 grams)	100	858

### TERMS & CONDITIONS

1. All prices are in Kenya Shillings subject to VAT
2. This price list applies to goods delivered or collected within Nairobi
3. For deliveries outside Nairobi, an additional transport charge of 4.5% shall be applicable
4. This price list cancels all the previous price lists
5. All the disputes arising in connection with this price list are subject to Nairobi Jurisdiction





If you like it... Crown it!

## HEAD OFFICE

### CROWN PAINTS KENYA PLC

P.O. Box 78848 - 00507  
LIKONI ROAD, INDUSTRIAL AREA  
NAIROBI, KENYA  
TEL: 020 6533604-12, 2165703/5/6, 2032751  
EMAIL: info@crownpaints.co.ke, sales@crownpaints.co.ke

## DEPOTS AND BRANCH OFFICES - KENYA

### AUTOMOTIVE DIVISION

CROWN PAINTS KENYA PLC  
P.O. Box 18112 – 00500  
Dar es Salaam Road, Nairobi, Kenya  
TEL: +254 20 6651331/2, 3524356  
EMAIL: autopaints@crownpaints.co.ke

### CROWN PAINTS KISUMU

P.O. Box 2001 - 40100  
Lowe Ogada Street, Kisumu, Kenya  
TEL: +254 2024949/2024267/2024117  
EMAIL: kisumu@crownpaints.co.ke

### CROWN PAINTS MERU

Nanyuki Highway,  
Next to Associated Motors,  
Meru, Kenya  
TEL: +254 20 2001251  
EMAIL: meru@crownpaints.co.ke

### CONSTRUCTION SECTOR

CROWN PAINTS KENYA PLC  
2<sup>nd</sup> Floor Muthithi Place, Muthithi Road,  
Westlands, Nairobi, Kenya  
TEL: +254 20 2349563, 2349565  
MOBILE: +254 709 887000  
EMAIL: westlandsshowroom@crownpaints.co.ke

### CROWN PAINTS MOMBASA

P.O. Box 84246 – 80100  
Gusii Street, Off Digo Road, Mombasa, Kenya  
TEL: +254 41 2314777-8 / 2220412 / 6292 / 8762  
MOBILE: +254 790 659935  
EMAIL: mombasa@crownpaints.co.ke

## CROWN DÉCOR WORLD - KENYA

### LAVINGTON

1<sup>st</sup> Floor Lavington Curve Mall, Nairobi  
El Molo Drive, James Gichuru Road  
MOBILE: +254 721 885488, 0722 985171

### NYALI

Nyali Centre, Links Road, Mombasa  
MOBILE: +254 711 957449  
EMAIL: nyalishowroom@crownpaints.co.ke

### ELDORET

Eagle Hardware, 1<sup>st</sup> Floor,  
Sosian Street, Eldoret  
TEL: +254 53 2033679 / 2032797  
EMAIL: eldoretshowroom@crownpaints.co.ke

### KAREN

Ground Floor, Symbion House, Nairobi  
Dagoretti Road next to The Hub  
MOBILE: +254 715 361027  
EMAIL: karenshowroom@crownpaints.co.ke

### MERU

Nanyuki Highway,  
Next to Associated Motors, Meru  
TEL: +254 20 2001251  
EMAIL: merushowroom@crownpaints.co.ke

### NAKURU

Ground Floor, Westside Mall,  
Kenyatta Avenue, Nakuru  
MOBILE: +254 720 408490  
EMAIL: nakurushowroom@crownpaints.co.ke

## EAST AFRICA OPERATIONS

### DAR ES SALAAM, TANZANIA

Mac One Plaza, Nyerere Road, Tazara,  
Dar es Salaam, Tanzania  
TEL: +255 769 482285, 745 200299  
EMAIL: darsales@crownpaints.co.tz

### KIGALI, RWANDA

Warehouse No. 1, Yara Warehouse, Free Trade Zone SEZ,  
Rwanda Estate Ltd, Gasabo District,  
Kigali, Rwanda  
MOBILE: +250 788 387440  
EMAIL: sales@crownpaints.co.rw

### ARUSHA, TANZANIA

Plot No. 33-36, Block E, Unga Ltd,  
Factory Area, Arusha, Tanzania  
TEL: +255 272 545192, 786 300861, 753 115551  
EMAIL: sales@crownpaints.co.tz

### REGAL PAINTS UGANDA LTD

P.O. Box - 31663  
6<sup>th</sup> Street, Industrial Area – Kampala-Uganda  
TEL: +256 41 4288449, 752 228951, 752 228918  
FAX: +256 414 288 453  
EMAIL: info@regalpaints.co.ug, sales@regalpaints.co.ug  
WEBSITE: www.regalpaints.co.ug

CALL CENTRE: +254 703 333 777/ +254 709 887 000 • WEBSITE: www.crownpaints.co.ke

www.crownpaints.co.ke

0709 887 000

   CrownPaintsPLC